

# SPYDERCRANE w295



**w295CRS Gasoline**



**w295CMRS Gasoline and Electric**



**w295CDRS Diesel**



Stability  
Set up on Uneven Sites  
Turn-Over-Protection  
Standard Item



Crawls Through Doors



Sets up in Tight Locations



Radio Remote Control  
One Hand Operation  
Standard Item



Distributed By:

**One Source**  
RENTALS • SALES • SERVICE

[www.onesourcerental.com](http://www.onesourcerental.com)

# SPYDERCRANE w295

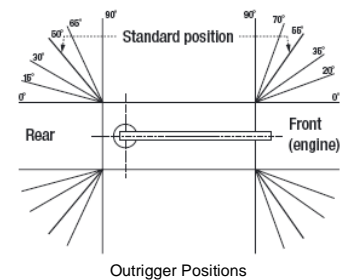
## Crane Specifications

Crane Model	w295CRS	w295CMRS	w295CDRS
Engine Type	Gasoline	Electric Motor & Gasoline	Diesel
Radio Remote Control	Standard	Standard	Standard
Capacity	6475 lbs @ 4.6 ft	6475 lbs @ 4.6 ft	6475 lbs @ 4.6 ft
Work Radius	1.4 to 28 ft	1.4 to 28 ft	1.4 to 28 ft
Boom Sections	5	5	5
Boom Extending Speed	20 ft / 20 sec	20 ft / 20 sec (Gas) 20 ft / 28 sec (Electric)	20 ft / 20 sec
Boom Lift Speed	0° - 78° / 11.0 Sec	0° - 78° / 11.0 Sec 0° - 78° / 15 Sec (Electric)	0° - 78° / 12.0 sec
Winch Speed	131 ft / Minute at 4 <sup>th</sup> Layer	131 ft / Minute at 4 <sup>th</sup> Layer 89 ft / Minute at 4 <sup>th</sup> layer (Elect)	
Hook Above Ground	29 ft	29 ft	29 ft
Hook Below Ground	38 ft	38 ft	38 ft
Automatic Hook Stow	Standard	Standard	Standard
Boom Length	Min 8.3 ft Max 28.4 ft	Min 8.3 ft Max 28.4 ft	Min 8.3 ft Max 28.4 ft
Outrigger Positions	53	53	53
Max Point Pressure	152.2 psi	152.2 psi	152.2 psi
Hydraulic Oil Tank	7 gal	7 gal	7 gal
Safety Devices	Turn-Over-Protection / Pressure Relief Valve for Hydraulic Circuit / Holding Valves for Boom Raising and Boom Telescoping / Pilot -Operated Check Valves for Outriggers/ Boom Angle Indicator with Load Chart / Automatic Mechanical Winch Brake / Hook Safety Latch / ATB System / Level / Crane and Running Lever Interlock Device		

W295CMRS Electric Motor Specifications	
Horsepower	5
Voltage	AC 200-220V/60 Hz
AC-DC Converter	200 V (AC) - (DC)
Recommended Power Cord	4 Wire-3 Phase-10 gauge

### ADDITIONAL FEATURES

- Radio Remote Control
- 24" Wide Travel Position
- Turn-Over-Protection
- Automatic Hook Stow
- Two Position Outrigger Legs
- Five Section Boom
- Capacity 6,475 lbs.



## Undercarriage Specifications

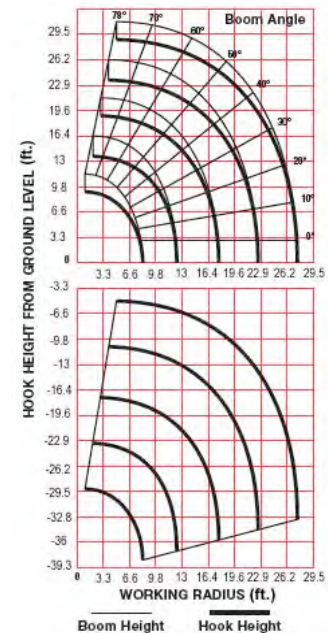
Crane Model	w295CRS	w295CMRS	w295CDRS
Horsepower	13	13 Gas - 5 Elect	11
Fuel Tank	1.85 gal	1.85 gal	1.85 gal
Max Speed (For-Rev)	1.43 mph	1.43 mph	1.43 mph
Ground Pressure (psi)	6.96 psi	6.96 psi	6.96 psi
Steering	Left & Right Independent Hydraulic System		
Parking Brake	Hydraulic Motor Built in Disk Brake		
Hill Climbing Stability	20°	20°	20°

## Dimensions and Weight

Crane Model	w295CRS	w295CMRS	w295CDRS
Total Width	24 inches	24 inches	24 inches
Total Height	4.58 ft	4.77 ft	4.58 ft
Total Length	8.97 ft	8.97 ft	9.10 ft
Wheelbase	3.5 ft	3.5 ft	3.5 ft
Gross Weight	4100 lbs	4380 lbs	4245 lbs.

## Load Chart

ALL BOOMS RETRACTED and SECOND STAGE EXTENDED										
Working Radius (ft)	3	4.5	5	6	7	8	10	11	13	
Outriggers Maximum	6450	6450	5920	5040	4595	3715	2940	2275	2055	
Outriggers Minimum	4485	4485	4485	3270	2500	1505	1150	840	620	
THIRD STAGE EXTENDED										
Working Radius (ft)	7	8	9	10	11	13	15	16	18	
Outriggers Maximum	3050	3050	3050	2830	2275	1835	1500	1215	1015	
Outriggers Minimum	1835	1500	1240	1170	905	685	555	420	330	
FOURTH STAGE EXTENDED										
Working Radius (ft)	11	12	13	15	16	18	20	21	23	
Outriggers Maximum	1945	1945	1725	1390	1170	995	860	775	665	
Outriggers Minimum	995	815	730	620	485	375	290	245	200	
FIFTH STAGE EXTENDED										
Working Radius (ft)	12	13	15	16	18	20	21	23	26	28
Outriggers Maximum	1280	1280	1060	885	750	665	575	510	400	355
Outriggers Minimum	840	705	620	510	420	355	290	220	155	135



WORLD CLASS QUALITY FROM JAPAN. INDUSTRY DESIGN LEADER.

Designed and Manufactured by Furukawa UNIC Corporation

[www.spydercrane.com](http://www.spydercrane.com), LLC ♦ 4654 South Ash Avenue ♦ Tempe, AZ ♦ 85282 ♦ USA ♦ 800.452.5011

Distributed By: One Source Equipment Rentals [www.onesourcerental.com](http://www.onesourcerental.com)