



ZB2044

TELEHANDLER

KEY FEATURES

- 20,000 lbs (9,072 kg) Maximum Lift Capacity
- 44'10" (13.7 m) Maximum Lift Height
- 12,000 lbs (5,443 kg) Capacity @ Maximum Lift Height
- 27'5" (8.4 m) Maximum Forward Reach
- 7,000 lbs (3,175 kg) Capacity @ Maximum Reach
- Cummins Tier 4i QSB 4.5C, Turbocharged and Charge-Air-Cooled Diesel, 168HP @ 2300 rpm
- Powershift, 3 Speed Transmission
- 3 Mode Steering
- 72" floating pin carriage with 60" pallet forks

STANDARD FEATURES

- Outriggers
- Rear axle "Stable-Lock" cylinder with backup accumulator
- Standard quick attach carriage mount system
- Auxiliary hydraulic for boom attachments
- Dual lift cylinders
- High pivot boom mount design
- Rear window and side screen
- Lockable under cab storage compartment / step
- Adjustable suspension seat with seat belt
- Dual joystick pilot operated controls for boom and frame level functions
- Tilt adjustable joystick console
- Gauge instrumentation
- Electronic powerview engine monitor/gauge
- Lockable steel swing up engine doors
- Dual batteries
- Independent front/rear brake systems
- Dual brake accumulators for dead engine braking
- Brake activated transmission disconnect
- 55 gallon (208 L) steel hydraulic tank
- 49 gallon (185 L) steel fuel tank
- Mirrors, right and left side
- Remote grease fittings for axle trunnion mount lubrication
- Easy to remove steel component and access covers
- 12 months/2000 hour warranty (5 years on structure)

Distributed By:


www.onesourcerental.com

ZB2044 TELEHANDLER 20,000 (9,072 kg) capacity, 44' 10" (13.67 m) maximum lift height

SPECIFICATIONS

ZB2044

Maximum Lift Capacity	20,000 lbs (9,072 kg)
Maximum Lift Height	44' 10" (13.67 m)
Rated Lift Capacity @ Maximum Height	12,000 lbs (4,536 kg)
Maximum Forward Reach	27' 5" (8.36 m)
Rated Lift Capacity @ Maximum Reach	7,000 lbs (3,175 kg)
O/A Length - Less Forks	20' 3" (6.17 m)
Overall Height - Stowed	9' (2.74 m)
Overall Width	8' 6" (2.59 m)
Ground Clearance	18" (46 cm)
Turning Radius - Outside	18' 4" (5.59 m)
Operating Weight	45,000 lbs (20,412 kg)
Engine	168 hp Cummins Tier 4i QSB 4.5C
Max Travel Speed - Forward	20.5 mph (33 kmh)
Transmission	Dana powershift, 3 speeds forward and reverse
Axles	Axletech steerable outboard planetary
Service Brakes	4 wheel disc
Parking Brakes	Pinion mounted dry disc on front axle
Steering	3 mode (2 wheel, 4 wheel, crab)
Tires	17.5 x 25 16PR grip lug

OPTIONAL EQUIPMENT

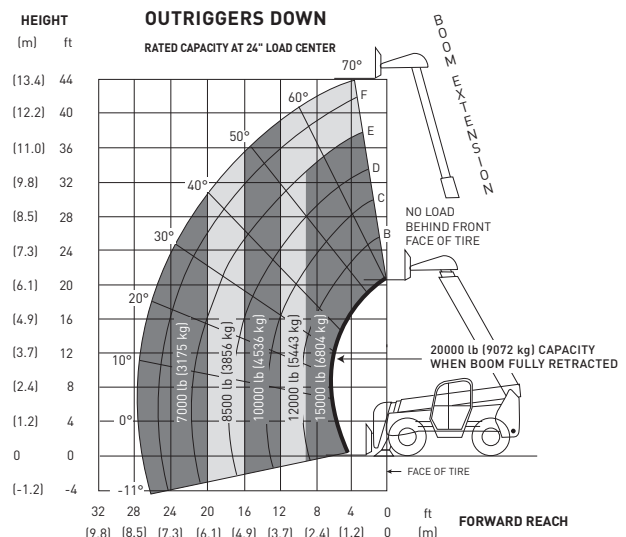
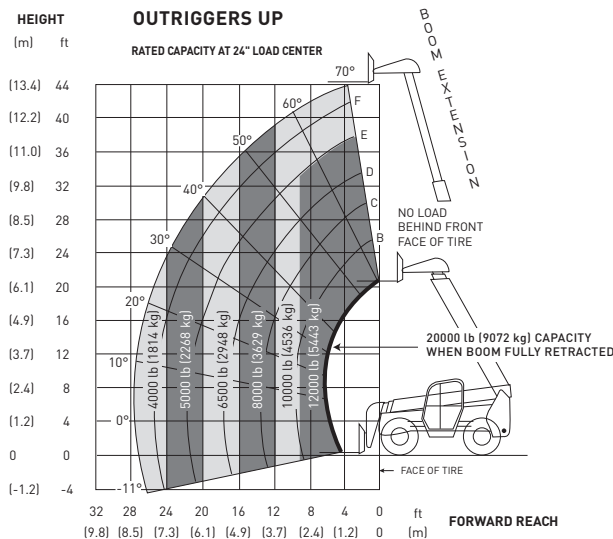
- Flashing Beacon Light
- Lighting Kit w/ Guards – 2 Front white / 2 Rear Red
- Front and Rear Turn Signals w/ Flashers
- Extra Operating Light with Guard
- Boom Mounted Operating Lights
- Front and Rear Fenders
- Fully Enclosed Operator Cab, Sound Insulation, Heater, Defroster, Dome Light, Front and Top Windshield Wiper
- Air Conditioning – requires enclosed cab option
- Mine Package (Backup Braking & Steering Systems, Drive Shaft Covers)
- Positive Air Shut-off Valve
- Non Destructive Testing

ATTACHMENTS

- 5 ft Jib Boom (20,000 lbs Capacity)
- 2.0 Cu. Yd. Light Material Handling Bucket
- Hydraulic Winch (15,000 lbs Capacity)
- Pipe and Pole Clamp
- Rotating Pipe and Pole Manipulator
- Bridge Stripper
- Various Carriage (72"-84") and Fork Sizes

TIRE OPTIONS

- Foam-Filled Tires



Skyjack Head Office

55 Campbell Rd. Guelph, ON Canada N1H 1B9
 Sales Inquiries: 1-877-755-4387 (1-877-SJLIFTS)
 Main Switchboard: 1-800-265-2738
 Phone: 519-837-0888
 Fax: 519-837-8104
 Email: skyjack@skyjack.com
 www.skyjack.com

IMPORTANT

- Machine design complies with ANSI/ITSDF B56.6-2005 stability requirements for rough terrain forklifts.
- Rated capacities shown are with machine on firm level ground, steered straight with frame level and on properly inflated tires.
- Read boom angle and boom extension, then determine allowable load from chart.
- Do not exceed rated loads as dangerous and unstable machine conditions will result.
- Always travel with boom retracted in the lowest possible position.

