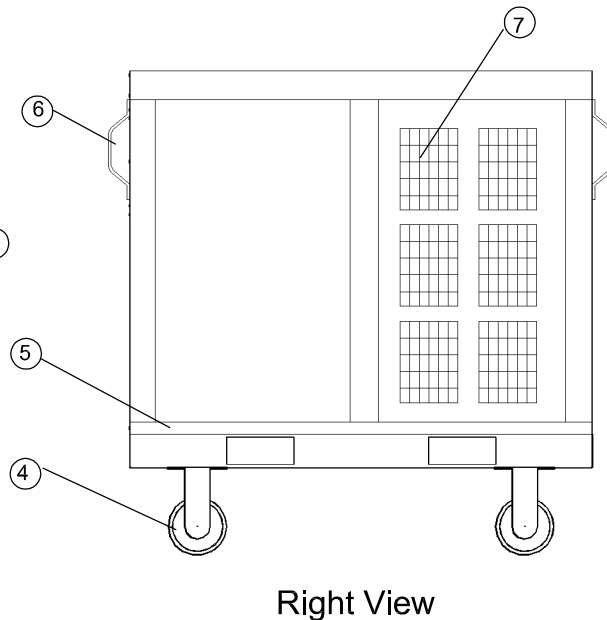
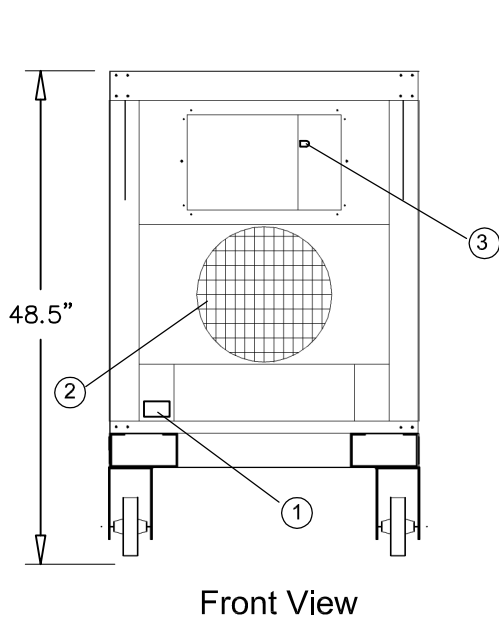
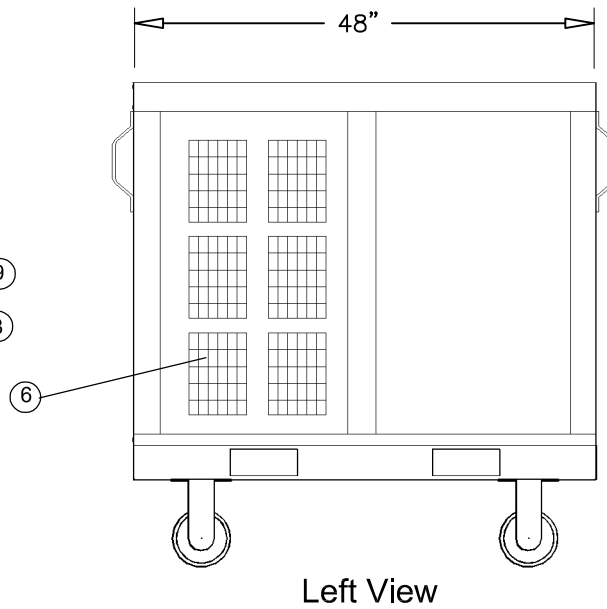
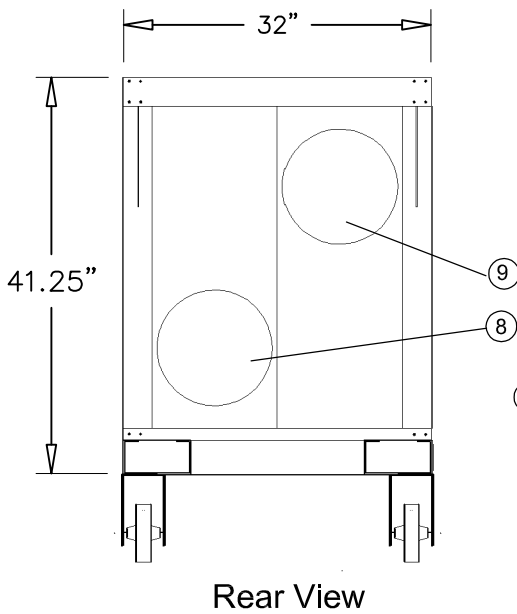
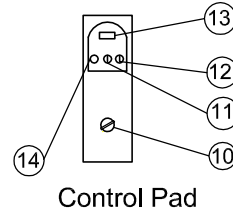


# KP05-43-5 Ton

## Legend

- |   |                       |
|---|-----------------------|
| 1 Power cord Inlet (10' length)               | 10 On/Off Switch      |
| 2 Condenser Hot Air Exhaust (14" Dia. Flange) | 11 Temp. Up Control   |
| 3 Control Panel Door                          | 12 Temp. Down Control |
| 4 Detachable Wheel (6" Dia.)                  | 13 Display            |
| 5 Skid Mounted                                | 14 Temp. Set Control  |
| 6 Handle                                      |                       |
| 7 Condenser Intake                            |                       |
| 8 Return Air (12" Dia. Flange)                |                       |
| 9 Cold Air Supply (12" Dia. Flange)           |                       |



**SPECIFICATIONS****Model KP05-43 - 5 Ton**

<b>COOLING CAPACITY</b>		
	BTU/hr @ 95 F at 60%RH	60,000 (Nominal 5-TON)
<b>CONSTRUCTION</b>		
	Skid	12-Guage Galvanized Steel
	Cabinet	16-Guage Powder Coated Galvanized Steel
<b>COMPRESSOR DATA</b>		
	Compressor Type	Reciprocating
	Condenser Operating Temperatures	30-110F.
	Non-CFC Refrigerant Charge (Lbs.)	407C
<b>FAN DATA</b>		
<b>EVAPORATOR</b>		
	Fan Type (Centrifugal) - 2	Direct Drive
	Air Flow (CFM)	2,475
	Supply & Return Air Flanges - 2	One 12-inch Flange for Each
	Maximum Duct Length	50 Feet for Supply & Return
<b>CONDENSER</b>		
	Fan Type (Centrifugal)	Direct Drive
	Air Flow (CFM)	3,500
	Condenser Exhaust Flange	One 20" Diameter Flange
	Condenser Maximum Duct Length	75 Feet
	Variable Frequency Drive	Yes, low ambient temp. control
<b>ELECTRICAL DATA</b>		
	Indoor/Outdoor	Approved
	Phase Monitor	YES, Power Quality Control
	Power Supply (Volts)	460-volt - 3 Phase
	Current Consumption (Amps/KW)	17.65/7.5
	Maximum Circuit Breaker (Amps)	30
	Minimum Circuit Capacity (Amps)	19.25
	Min/Max Voltage	420-500
	Power Cord Gauge/Length in Ft.	10AWG/8'
	Plug Configuration	FIELD SUPPLIED
<b>DIMENSIONAL DATA</b>		
	Width x Lenth x Height (Inches)	32 x 48 x 48.5 with 6-in Wheels
	Weight (Lbs)	669
	Shipping Weight	723
	Swivel Locking Heavy Duty Castors	6 inches
<b>SAFETY DEVICE DATA</b>		
	Compressor Overload	INTERNAL
	Fan Motor Overload	AUTOMATIC INTERNAL
	High Pressure Switch	MANUAL
	Low Pressure Switch	AUTOMATIC
	Compressor Short Cycle	YES
	Compressor Time Delay	YES
	Automatic Restart	YES
	Thermostat	MICROPROCESSOR/DIGITAL
	Condensate Pump w 20' Head Pres.	YES
	Condensate Pump Overflow	YES