

Distributed By:

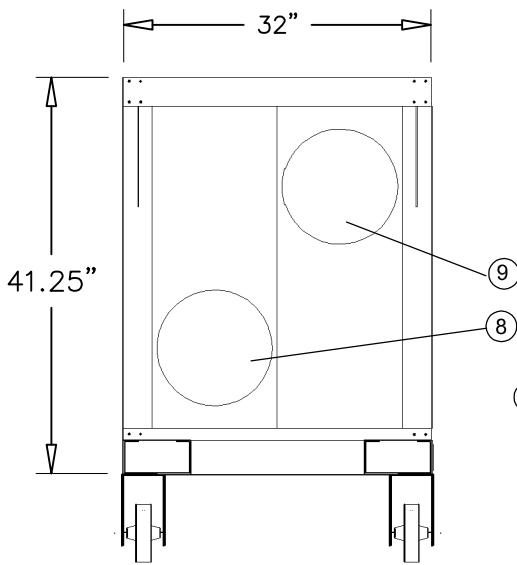
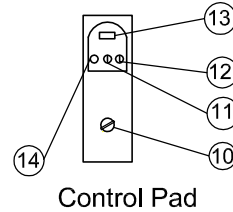


www.onesourcerental.com

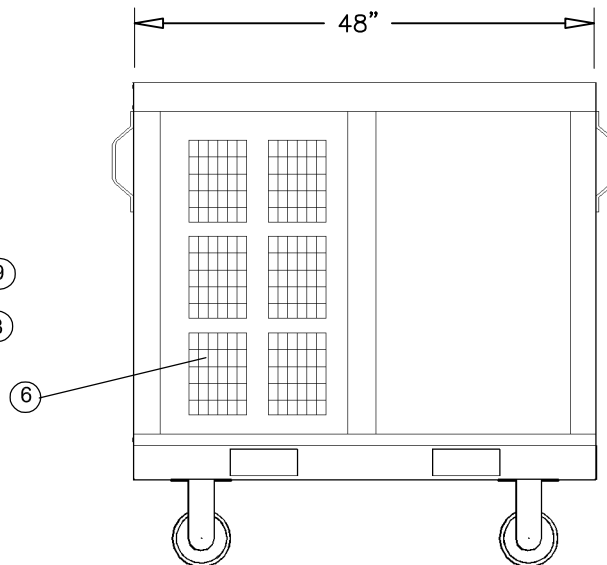
KP05-21-5 Ton

Legend

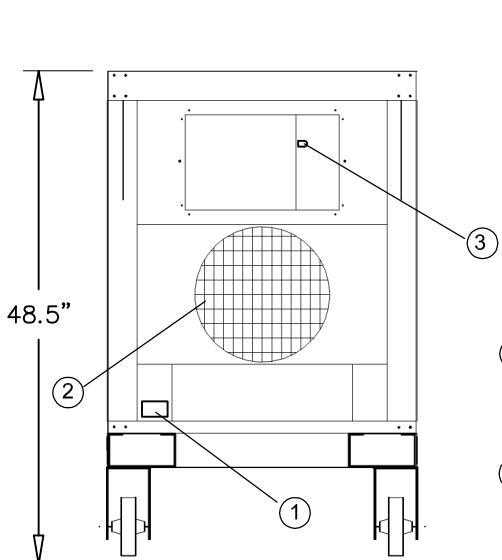
- | | |
|---|-----------------------|
| 1 Power cord Inlet (10' length) | 10 On/Off Switch |
| 2 Condenser Hot Air Exhaust (14" Dia. Flange) | 11 Temp. Up Control |
| 3 Control Panel Door | 12 Temp. Down Control |
| 4 Detachable Wheel (6" Dia.) | 13 Display |
| 5 Skid Mounted | 14 Temp. Set Control |
| 6 Handle | |
| 7 Condenser Intake | |
| 8 Return Air (12" Dia. Flange) | |
| 9 Cold Air Supply (12" Dia. Flange) | |



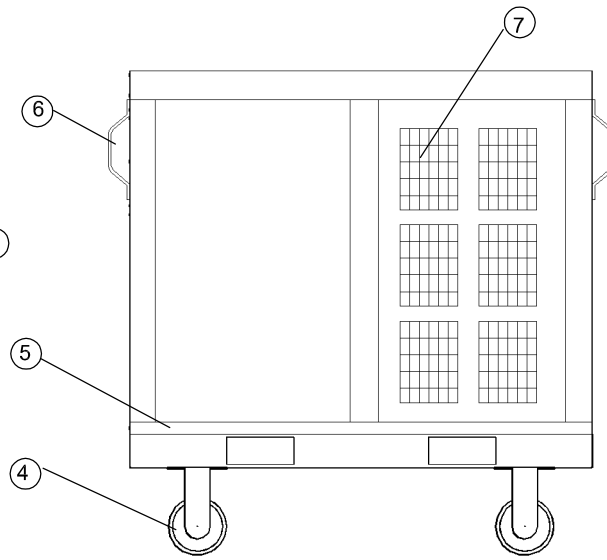
Rear View



Left View



Front View



Right View



1-800-KWIKOOL

Distributed By:


www.onesourcerental.com

SPECIFICATIONS

Model KP05-21 - 5 Ton

| | | |
|---------------------------|-----------------------------------|---|
| COOLING CAPACITY | | |
| | BTU/hr @ 95 F at 60%RH | 60,000 (Nominal 5-TON) |
| CONSTRUCTION | | |
| | Skid | 12-Guage Galvanized Steel |
| | Cabinet | 16-Guage Powder Coated Galvanized Steel |
| COMPRESSOR DATA | | |
| | Compressor Type | Reciprocating |
| | Condenser Operating Temperatures | 30-110F. |
| | Non-CFC Refrigerant Charge (Lbs.) | 407C |
| FAN DATA | | |
| EVAPORATOR | | |
| | Fan Type (Centrifugal) - 2 | Direct Drive |
| | Air Flow (CFM) | 2,452 |
| | Supply & Return Air Flanges - 2 | One 12-inch Flange for Each |
| | Maximum Duct Length | 50 Feet for Supply & Return |
| CONDENSER | | |
| | Fan Type (Centrifugal) | Direct Drive |
| | Air Flow (CFM) | 3,500 |
| | Condenser Exhaust Flange | One 14"Diameter Flange |
| | Condenser Maximum Duct Length | 75 Feet |
| | Variable Frequency Drive | Yes, low ambient temp. control |
| ELECTRICAL DATA | | |
| | Indoor/Outdoor | Approved |
| | Phase Monitor | NO |
| | Power Supply (Volts) | 208-230-volt - Single Phase |
| | Current Consumption (Amps/KW) | 45.5 |
| | Maximum Circuit Breaker (Amps) | 60 on 208-V/50 at 230-V |
| | Minimum Circuit Capacity (Amps) | 50 |
| | Min/Max Voltage | 195-225/210-250 |
| | Power Cord Gauge/Length in Ft. | 8AWG/10' |
| | Plug Configuration | FIELD SUPPLIED |
| DIMENSIONAL DATA | | |
| | Width x Lenth x Height (Inches) | 32 x 48 x 48.5 with 6-in Wheels |
| | Weight (Lbs) | 646 |
| | Shipping Weight | 700 |
| | Swivel Locking Heavy Duty Castors | 6 inches |
| SAFETY DEVICE DATA | | |
| | Compressor Overload | INTERNAL |
| | Fan Motor Overload | AUTOMATIC INTERNAL |
| | High Pressure Switch | MANUAL |
| | Low Pressure Switch | AUTOMATIC |
| | Compressor Short Cycle | YES |
| | Compressor Time Delay | YES |
| | Automatic Restart | YES |
| | Thermostat | MICROPROCESSOR/DIGITAL |
| | Condensate Pump w 20' Head Pres. | YES |
| | Condensate Pump Overflow | YES |


1-800-KWIKOOL