

# Model G10-55A TELEHANDLER



## Performance

### Rated Capacity

At 24 in. (610 mm) load center,  
10,000 lb (4,536 kg)

### Maximum Lift Height

55 ft (16.8 m)

### Frame Leveling

10 degrees

### Lift Speed (boom retracted)

Up: 14.6 sec  
Down: 15.8 sec

### Boom Speed

Extend: 17.3 sec  
Retract: 16.8 sec

### Travel Speed Forward

20 mph (32 kmph)

### Drawbar Pull (loaded)

20,000 lb (9,072 kg)

### Operating Weight

With 48 in. (1.2 m) carriage and forks,  
34,400 lb (15,604 kg)

## Standard Specifications

### Engine

Make and Model	Perkins 1104D
	Turbocharged and Aftercooled
Fuel	No. 2 Diesel
Cycles	4
No. of Cylinders	4
Displacement	276 cu in (4.5 L)
Rated Speed	2,400 rpm
Max. Gross BHP	125 hp (93 kW)
Fuel Tank	38 gal (144 L)

### Engine Filters

Two-stage dry air cleaner — centrifugal pre-cleaner with continuous dust ejector and replaceable dry filter element.

Visual service indicator.

Replaceable element-type fuel filter.

Full-flow replaceable-element engine oil filter.

### Electrical System

Voltage — 12V

Alternator — 65 amp

Battery — 1050 Cold Cranking amps at 0°F

### Transmission

Powershift with torque converter  
4 speeds forward, 3 reverse.

Neutral start switch (Park brake must be engaged to start).

Full time 4-wheel drive.

Directional and gear change control on single steering mounted lever.

### Axles

Trunnion mounted planetary 55° steer axles.

Integral steer cylinder.

High bias limited slip differential on front axle.

### Service Brakes

Inboard wet disc brake on front and rear axles.

### Parking Brakes

Wet disc spring-applied hydraulic release on front axle.

Light on dashboard indicates when brake is on.

### Tires

Standard: 14.0 x 24 — 12PR, G2 type.

### Cab

Certified ROPS/FOPS structure, horn and adjustable seat.

Forward, neutral, reverse lever on left of steering column.

### Steering

Hydraulic power steering with manual backup.

Operator selectable 4-wheel circle, 4-wheel crab, 2-wheel front.

### Instruments

Volt meter, hourmeter, engine oil pressure, temperature, fuel gauge.

All gauges protected by clear acrylic cover.

### Controls

Grouped for operator comfort and convenience.

Key operated ignition/starter switch.

Boom lift, telescope and fork tilt on single joystick.

Right-hand sway and outrigger levers.

Foot throttle.

### Hydraulic System-Implement

Load sense piston pump.

57 gal (215.7 L) system capacity.

10 micron filter with visual service indicator and suction strainer.

Lift, telescope, tilt, sway and outrigger cylinders have holding valves intended to prevent dropping of load in the event of hose or other hydraulic failure.

### Auxiliary Hydraulics

## Accessories & Options

### Enclosed Cab

### Air Conditioning

### Auxiliary Electrics

### AccuPlace™ with Ride Control

### Work Lights

### Road Lights

### Rotating Beacon

### Pintle Hook

### Fenders

### Brick Guard

### Tires

Foam-filled  
Rock  
Solid  
17.5 x 25

## Attachments

### Standard Carriage

50 in. (1.3 m) or 60 in. (1.5 m) or 72 in. (1.8 m)

### Side-Tilt Carriage

50 in. (1.3 m) or 60 in. (1.5 m) or 72 in. (1.8 m)

### Swing Carriage

72 in. (1.8 m); 90 or 180 degrees

### Sheet Material Adapter

### Tower

8 ft (2.4 m); 50 in. (1.3 m) Standard or Side-tilt Carriage\*

### Pallet Forks

2.36 x 4 x 48 in. (60 mm x 102 mm x 1.2 m)  
2.36 x 5 x 48 in. (60 mm x 127 mm x 1.2 m)  
2.00 x 6 x 72 in. (51 mm x 152 mm x 1.8 m)

### Lumber Forks

1.75 x 7 x 60 in. (44 mm x 178 mm x 1.5 m)  
2.36 x 6 x 60 in. (60 mm x 152 mm x 1.5 m)

### Cubing Forks

2 x 2 x 48 in. (51 mm x 51 mm x 1.2 m)

### Material Bucket

72 in. (1.8 m), 1.0 cu yd (0.76 m<sup>3</sup>)  
96 in. (2.4 m), 1.5 cu yd (1.15 m<sup>3</sup>)  
102 in. (2.6 m), 2.0 cu yd (1.53 m<sup>3</sup>)

### Grapple Bucket

96 in. (2.4 m), 1.75 cu yd (1.34 m<sup>3</sup>)

### Truss Boom

12 ft (3.7 m), 2,000 lb (907 kg) capacity  
15 ft (4.6 m), 2,000 lb (907 kg) capacity  
12 ft (3.7 m) with winch, 2,000 lb (907 kg) capacity

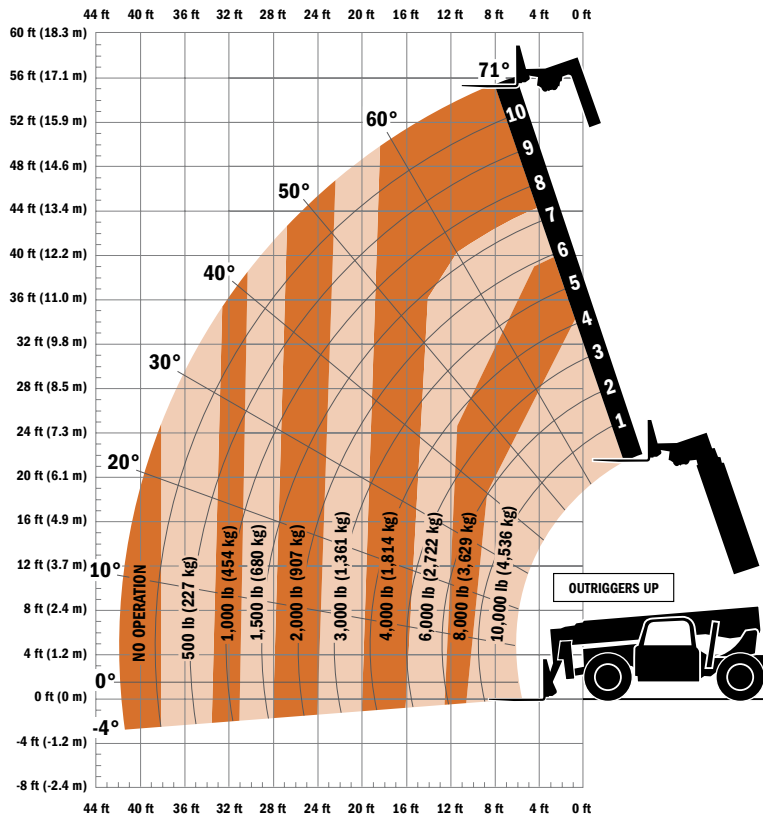
### Fork Mounted Work Platform

8 ft (2.4 m), 1,000 lb (455 kg) capacity

### Lifting Hook



# Model G10-55A TELEHANDLER



## Dimensions

Length (less forks)	243.8 in. (6.2 m)
Width	101 in. (2.56 m)
Height	101 in. (2.56 m)
Wheelbase	144 in. (3.65 m)
Ground Clearance	18 in. (457 mm)
Outside Turning Radius	168 in. (4.27 m)
Max. Reach from Front Tires to 24 in. (610 mm) Load Center	42 ft (12.8 m)

Distributed By:



[www.onesourcerental.com](http://www.onesourcerental.com)

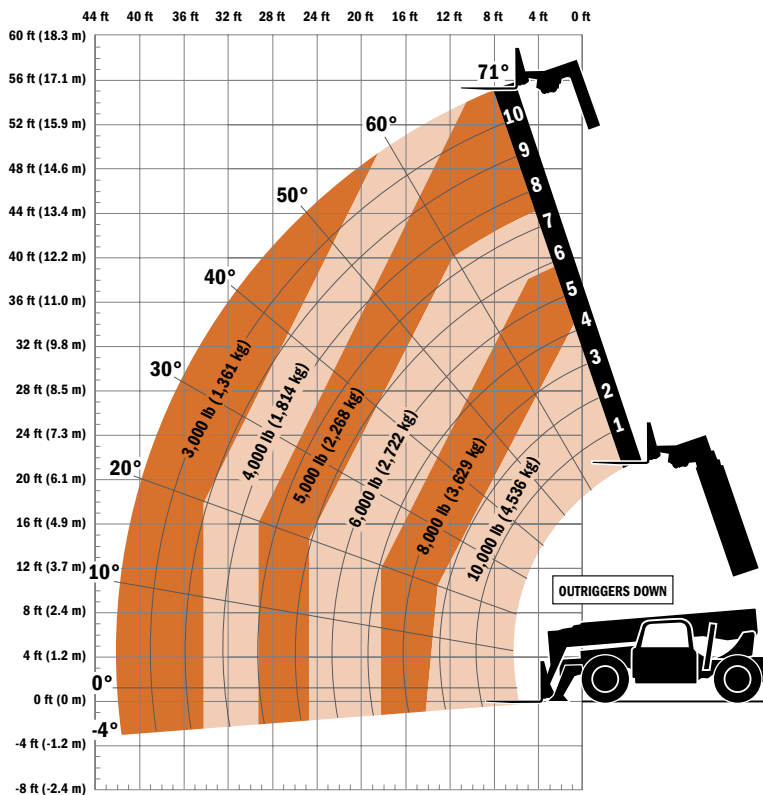
## IMPORTANT

Rated lift capacities shown are with machine equipped with carriage and pallet forks. The machine must be level on a firm surface with undamaged, properly inflated tires. Machine specifications and stability are based on rated lift capacities at specific boom angles and boom lengths. (If specifications are critical, the proposed application should be discussed with your dealer.)

DO NOT exceed rated lift capacity loads, as unstable and dangerous machine conditions will result.

DO NOT tip the machine forward to determine the allowable load.

Use only JLG approved attachments with proper material handler model/attachment load capacity charts displayed in the operator's cab. OSHA requires all rough terrain forklift operators be trained according to OSHA 29 CFR 1910.178 (L).



Due to continuous product improvements, JLG Industries reserves the right to make specification and/or equipment changes without prior notification. This machine meets or exceeds ANSI/ITSDF B56.6-2005 as originally manufactured for intended applications.

Form No.: SS-G642A-0204-10M  
Part No.: 3132210  
Printed in USA  
R100802



## JLG Industries, Inc.

1 JLG Drive  
McConnellsburg, PA 17233-9533  
Telephone 717-485-5161  
Toll-free in US 877-JLG-LIFT  
Fax 717-485-6417

[www.jlg.com](http://www.jlg.com)

An Oshkosh Corporation Company