

Model E Series

ELECTRIC BOOM LIFTS

Distributed By:



www.onesourcerental.com



Features

- Eight 6V 370 Amp-Hour Deep Cycle Batteries
- Automatic Traction Control (ATC)
- Inward Self-Closing Swing Gate
- 180 Degree Hydraulic Platform Rotator
- 110V-AC Receptacle on Platform
- 5 Degree Tilt Alarm/Indicator Light
- Hourmeter
- Battery Condition Indicator
- Lifting/Tie Down Lugs
- Horn
- Operator Tool Tray
- All Motion Alarm

Accessories & Options

- Platform Worklights
- Mesh to Top Rail—Bolt-on Aluminum
- Acrylic Console Shield
- Cylinder Bellows
- UL® EE Rating¹
- Flashing Amber Beacon

1. Not available on Multi-Powered models

Please refer to the JLG Aerial Work Platform Sales Manual for additional features and accessories.

Specifications

Reach

| | |
|--------------------------------|---------------------------------|
| Platform Height | |
| E300AJ/E 300AJP | 30 ft (9.14 m) |
| E400A/E400AJP | 40 ft (12.19 m) |
| E400A Narrow/E400AJP Narrow | 40 ft (12.19 m) |
| E450A/E450AJ | 45 ft (13.72 m) |
| Horizontal Outreach | |
| E/M400A Narrow | 21 ft 2 in. (6.45 m) |
| E/M450A | 23 ft 1 in. (7.04 m) |
| With Jib | |
| E300AJ | 20 ft (6.1 m) |
| E/M450AJ | 23 ft 9 in. (7.24 m) |
| With JibPLUS | |
| E300AJP | 20 ft 6 in. (6.25 m) |
| E/M400AJP Narrow | 22 ft 5 in. (6.83 m) |
| Up and Over Height | |
| E300AJ/E300AJP | 13 ft 1 in. (3.99 m) |
| E400A/E400AJP | 21 ft 6 in. (6.55 m) |
| E400A Narrow/E400AJP Narrow | 21 ft 6 in. (6.55 m) |
| E450A | 24 ft 7 in. (7.49 m) |
| E450AJ | 25 ft 3 in. (7.7 m) |
| Swing | 360 Degrees Non-Continuous |
| Platform Capacity | 500 lb (227 kg) |
| Platform Rotator | 180 Degrees Hydraulic |
| Jib (range of articulation) | |
| E300AJ/E300AJP | 144 Degrees (+84, -60) Vertical |
| E400AJP/E400AJP Narrow | 144 Degrees (+84, -60) Vertical |
| E450AJ | 141 Degrees (+86, -55) Vertical |
| JibPLUS | |
| E300AJP/E400AJP/E400AJP Narrow | 180 Degrees Horizontal |

(continued on back page)



Versatility to Meet Your Needs

- Choose from three popular platform heights and three chassis widths
- Non-jib and optional jib models
- Automatic traction control for on and off slab mobility
- Zero emissions and low noise

Power to Stay On the Job Longer

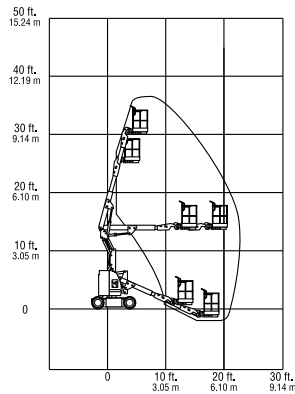
- Industry-leading duty cycles
- Multi-power models provide round-the-clock operation and faster battery charging

Unmatched Reach and Positioning Capabilities

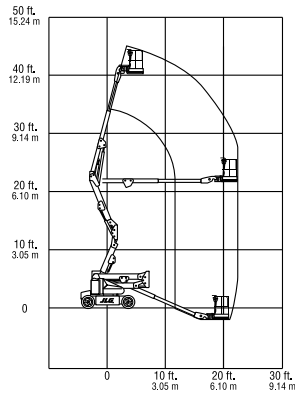
- Exclusive JibPLUS® boom option provides 180-degree range of side-to-side movement
- 48 in. narrow chassis models for narrow aisles
- Near vertical jib positioning and access to areas other machines can't reach
- Multiple function operation for efficient maneuvering in tight spaces

Specifications

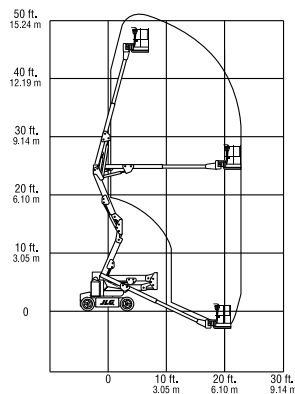
E300



E400



E450



Dimensions

| | |
|--------------------------------|------------------------------------|
| Platform Size | |
| E300AJ/E300AJP | 30 x 48 in. (0.76 x 1.22 m) |
| E400A Narrow | 30 x 48 in. (0.76 x 1.22 m) |
| E400AJP Narrow | 30 x 48 in. (0.76 x 1.22 m) |
| E400A/E400AJP | 30 x 60 in. (0.76 x 1.52 m) |
| E450A/E450AJ | 30 x 60 in. (0.76 x 1.52 m) |
| Overall Width | |
| E300AJ/E300AJP | 4 ft (1.22 m) |
| E400A/E400AJP/E450A/E450AJ | 5 ft 9 in. (1.75 m) |
| E400A Narrow/E400AJP Narrow | 4 ft 11 in. (1.5 m) |
| Tailswing | |
| E300AJ/E300AJP/E400A | Zero |
| E400AJP/E450A/E450AJ | Zero |
| E400A Narrow/E400AJP Narrow | 4 in. (10 cm) |
| Stowed Height | |
| E300AJ/E300AJP/E400A | 6 ft 7 in. (2.0 m) |
| E400AJP/E450AJ | 6 ft 7 in. (2.0 m) |
| E400A Narrow/E400AJP Narrow | 6 ft 5.75 in. (1.97 m) |
| E450A | 6 ft 6 in. (1.98 m) |
| Stowed Length | |
| E400A/E400AJP/E400A Narrow | 18 ft 1 in. (5.5 m) |
| E400AJP Narrow | 18 ft 1 in. (5.5 m) |
| E450A | 19 ft 1 in. (5.82 m) |
| With Jib | |
| E300AJ | 18 ft (5.49 m) |
| E450AJ | 21 ft 2 in. (6.45 m) |
| With JibPLUS | |
| E300AJP/E400AJP | 18 ft 8 in. (5.70 m) |
| E400AJP Narrow | 22 ft (6.7 m) |
| Wheelbase | |
| E300AJ/E300AJP | 5 ft 5 in. (1.65 m) |
| E400A/E400AJP/E400A Narrow | 6 ft 7 in. (2.0 m) |
| E400AJP Narrow/E450A/E450AJ | 6 ft 7 in. (2.0 m) |
| Ground Clearance | |
| E300AJ/E300AJP | 4 in. (10 cm) |
| E400A/E400AJP/E450A/E450AJ | 8.5 in. (22 cm) |
| E400A Narrow/E400AJP Narrow | 5 in. (13 cm) |
| Weight | |
| E400A/E400AJP | 12,100 lb (5,488 kg) |
| E400A Narrow/E400AJP Narrow | 13,100 lb (5,942 kg) |
| E450A | 12,600 lb (5,715 kg) |
| With Jib | |
| E300AJ | 15,400 lb (6,985 kg) |
| E450AJ | 14,400 lb (6,532 kg) |
| With JibPLUS | |
| E300AJP | 15,800 lb (7,166 kg) |
| E400AJP | 13,700 lb (6,214 kg) |
| E400AJP Narrow | 14,900 lb (6,759 kg) |
| Ground Bearing Pressure | |
| E300AJ/E300AJP | 121 psi (8.47 kg/cm ²) |
| E400A/E400AJP | 80 psi (5.6 kg/cm ²) |
| E400A Narrow/E400AJP Narrow | 95 psi (6.7 kg/cm ²) |
| E450A | 64 psi (4.48 kg/cm ²) |
| E450AJ | 75 psi (5.25 kg/cm ²) |
| With JibPLUS | |
| E300AJP | 130 psi (9.1 kg/cm ²) |
| E400AJP | 74 psi (5.2 kg/cm ²) |
| E400AJP Narrow | 185 psi (13.0 kg/cm ²) |

Chassis

| | |
|---------------------------------|---------------------------|
| Drive Speed | |
| E300AJ/E300AJP | 3.0 mph (4.8 kmph) |
| E400A Narrow/E400AJP Narrow | 3.0 mph (4.8 kmph) |
| E400A/E400AJP/E450A/E450AJ | 3.2 mph (5.2 kmph) |
| Gradeability | |
| E300AJ/E300AJP | 25% |
| E400A/E400AJP/E400A Narrow | 30% |
| E400AJP Narrow/E450A/E450AJ | 30% |
| Turning Radius (Outside) | |
| E300AJ/E300AJP | 5 ft (1.52 m) |
| E400A/E400AJP/E450A/E450AJ | 2 ft (61 cm) |
| E400A Narrow/E400AJP Narrow | 2 ft 10 in. (86 cm) |
| Turning Radius (Inside) | |
| E300AJ/E300AJP | 10 ft 2 in. (3.1 m) |
| E400A/E400AJP/E400A Narrow | 10 ft 4 in. (3.15 m) |
| E400AJP Narrow/E450A/E450AJ | 10 ft 4 in. (3.15 m) |
| Tire Size/Type | |
| E300AJ/E300AJP | 7.5 x 12 Non-Marking |
| E400A/E400AJP | 240/55-17.5 pneumatic |
| E450A/E450AJ | 240/55-17.5 pneumatic |
| Tire Size/Type (front) | |
| E400A Narrow/E400AJP Narrow | 22 x 6 x 17.5 Non-Marking |
| Tire Size/Type (back) | |
| E400A Narrow/E400AJP Narrow | 22 x 7 x 12 Non-Marking |

Power Source

| | |
|--|---|
| Electrical System | 48V DC |
| Batteries | 8 x 6V, 370 amp-hr |
| Drive Motors | Dual Electric Traction |
| Brakes | Automatic Spring Applied Multiple Disks |
| Hydraulic Motor/Pump | Permanent Magnet Motor/Gear Pump |
| Hydraulic Reservoir | |
| E300AJ/E300AJP | 3 gal. (11.4 L) |
| E400A/E400AJP/E400A Narrow | 4 gal. (15.2 L) |
| E400AJP Narrow/E450A/E450AJ | 4 gal. (15.2 L) |
| Generator Set (Multi-Power Options) | |
| E400A/E400AJP/E400A Narrow | Fully Automatic, 45 Amp Kubota 6 hp Air-Cooled Engine |
| E400AJP Narrow/E450A/E450AJ | Fully Automatic, 45 Amp Kubota 6 hp Air-Cooled Engine |
| Engine Fuel Tank | |
| E400A/E400AJP/E400A Narrow | 4 gal. (15.2 L) |
| E400AJP Narrow/E450A/E450AJ | 4 gal. (15.2 L) |



JLG Industries, Inc.

1 JLG Drive
McConnellsburg, PA 17233-9533
Telephone 717-485-5161
Toll-free in US 877-JLG-LIFT
Fax 717-485-6417

www.jlg.com

An Oshkosh Corporation Company