



## Performance

Rated Capacity	16,755 lb	7,600 kg
Maximum Lift Height	31 ft. 8 in.	9.65 m
Load at Max Height	9,900 lb	4,491 kg
Maximum Forward Reach	18 ft 7 in.	5.66 m
Load at Max Reach	5,500 lb	2,495 kg
Frame Leveling	8 degrees	
Lift Speed (boom retracted)		
Up	14.1 sec	
Down	10.9 sec	
Boom Speed		
Extended	13.2 sec	
Retracted	10.9 sec	
Top Travel Speed	20 mph	32 kph
Drawbar Pull (loaded)	23,000 lb	102 kN
Outside Turning Radius	13 ft 2 in.	4.01 m
Operating Weight	31,145 lb	14,127 kg

## Standard Specifications

### Engine

Make and Model	Deutz TCD 3.6L	
No. of Cylinders	4	
Displacement	220 cu in.	3.6 L
Gross Basic Power	134 hp	100 kW
Maximum Torque @ 2200 rpm	369 lb-ft	500 Nm
Fuel Tank Capacity	39 gal.	148 L

### Transmission

Hydrostatic 2-speed

### Axles

Trunnion mounted planetary 45 degree steer axles.  
Integral steer cylinder.  
High bias limited slip differential on front axle.

### Brakes

Service brakes are inboard wet disc brake on front and rear axles and include inching.  
Parking brakes are wet disc spring applied hydraulic release on front axle.

### Tires

Standard	17.5-25 SGG
Optional	Foam-Filled

### Cab

- Certified ROPS/FOPS structure
- Horn
- Tilt & auxiliary hydraulics on joystick
- Adjustable seat
- Single joystick controls
- Anti-theft
- Enclosed cab
- Tilt steering column
- Retractable sunscreen

### Steering 4-Wheel

Hydraulic power steering  
Operator selectable 4-wheel circle, 4-wheel crab, 2-wheel front

### Instruments

- Volt meter
- Hourmeter
- Engine oil pressure gauge
- Temperature gauge
- Fuel gauge
- DEF gauge

## Hydraulic System-Implement

Capacity 292 L  
Load sense piston pump. Auxiliary hydraulics used for all attachments equipped with cylinders or other hydraulic components.

## Accessories & Options

- Auxiliary Electrics
- Hydraulic Coupler
- Road Lights
- Fenders
- Air Conditioning
- Brick Guards
- Work Lights
- Rotating Beacon
- Roof Wiper
- Reversing Fan
- Ride Control
- Reverse Sensing System
- Boom Brushes
- Dual Auxiliary Hydraulics
- Arctic Package
- Secondary Steering
- Boom Float
- Multi-Function Display with Reversing Camera
- White Noise Back-up Alarm
- Multiple Seat Options
- SmartLoad Technology

## Attachments

Standard Carriage	60 in.	15 m
	72 in.	1.8 m
	87 in.	2.2 m
Dual Fork Positioning Carriage	72 in.	1.8 m
Side-Shift Carriage with Dual Fork Positioning	72 in.	1.8 m
General Purpose Bucket	94 in., 2.6 cu yd	2.38 m, 1.98 m³
Light Material Bucket	94 in., 5.2 cu yd	2.38 m, 3.97 m³
Multipurpose 4-in-1 Bucket	94 in., 1.3 cu yd	2.38 m, 0.99 m³
Multipurpose 4-in-1 Bucket	94 in., 2.6 cu yd	2.38 m, 1.98 m³
Grapple Bucket	94 in., 1.7 cu yd	2.38 m, 1.29 m³
	94 in., 2.6 cu yd	2.38 m, 1.98 m³
Material Handling Arm	16,750 lb Capacity	7,598 kg
Hook, Coupler Mounted	16,750 lb Capacity	7,598 kg
Winch, Coupler Mounted	8,000 lb Capacity	3,629 kg
Bale Cradle, Round Bale	7,000 lb Capacity	3,175 kg
Bale Clamp, Square Bale	10,000 lb Capacity	4,536 kg
Pipe Grapple	96 in., 8,000 lb Capacity	2.4 m, 3,629 kg
Log Handler	80 in., 8,000 lb Capacity	2.03 m, 3,629 kg
Steel Coil Handler	16,750 lb Capacity	7,598 kg

# 1732

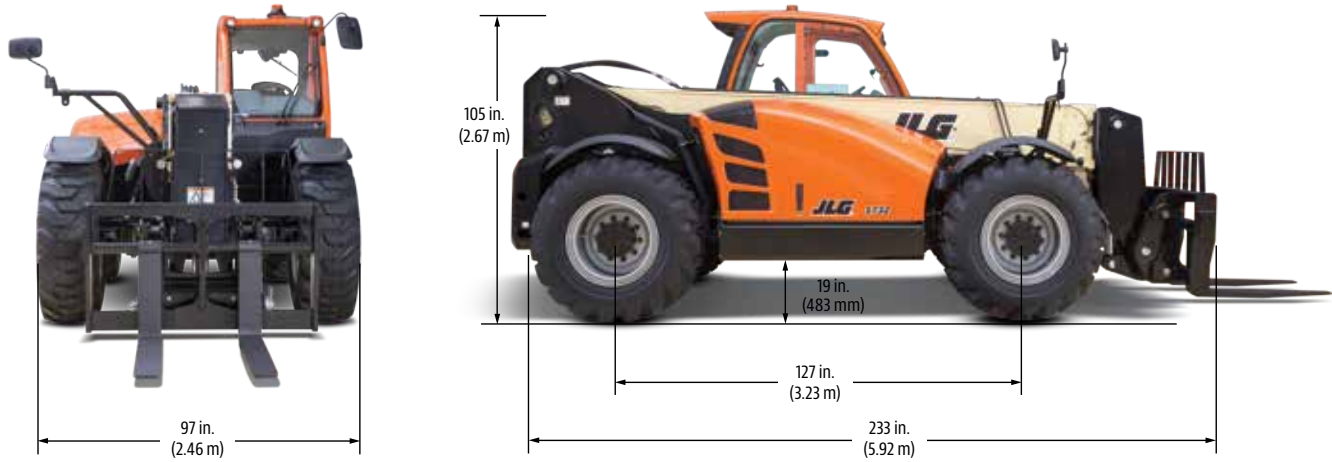
TELEHANDLER

Distributed By:  
**One Source**  
 RENTALS • SALES • SERVICE  
[www.onesourcerental.com](http://www.onesourcerental.com)

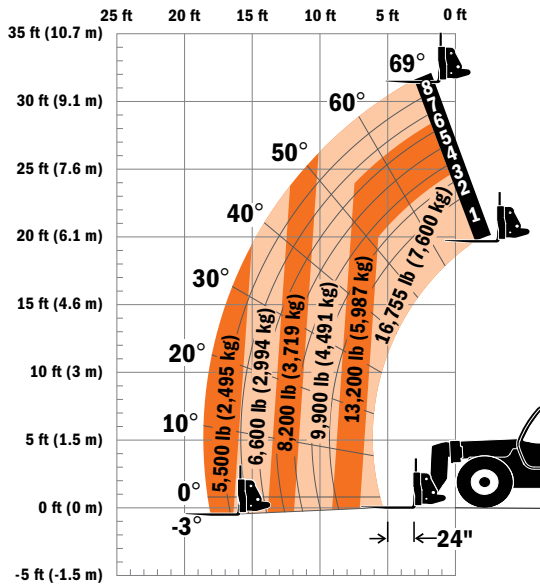


## Dimensions

All dimensions are approximate.



## Load Chart



## The JLG "1 & 5" Warranty

JLG Industries, Inc. backs its products with its exclusive "1 & 5" Warranty. We provide coverage on all products for one (1) full year, and cover all specified major structural components for five (5) years. Due to continuous product improvements, we reserve the right to make specification and/or equipment changes without prior notification. This machine meets or exceeds applicable OSHA Regulations in 29 CFR 1910.67, 29 CFR 1926.453, ANSI A92.5-2006, and CSA Standard CAN3-B354.2-M82, as originally manufactured for intended applications.

Part No.: 3132248  
 Printed in USA



**JLG Industries, Inc.**  
 1 JLG Drive  
 McCConnellsburg, PA 17233-9533  
 Telephone 717-485-5161  
 Toll-free in US 877-JLG-LIFT  
 Fax 717-485-6417  
[www.jlg.com](http://www.jlg.com)

**An Oshkosh Corporation Company**