

Best Selling!

Model VG400

Distributed By:



www.onesourcerental.com

Fits Through 32" Doorway

Model VG1000



MEA 29-05-E



MEA 29-05-E

SPECIFICATIONS

	VG400	VG1000
Input	400,000 BTU/Hr	1,000,000 BTU/Hr
Fuel	Vapor Propane/Natural Gas	Vapor Propane/Natural Gas
Gas Consumption	4.4 GPH Propane/400 CFH NG	11 GPH Propane/1000 CFH NG
Gas Connection	3/4" FNPT	1-1/4" FNPT
Electrical	120 Volts 20 amp circuit	240 Volts 1 ϕ 30 amp circuit
Fan	2,100 CFM 1/2" SP	4,075 CFM 2.0" SP
Thermostat	Standard On/Off	Standard On/Off
Temp Rise	200°F @ 0°F Ambient	200°F @ 0°F Ambient
Rated Efficiency	80%	80%
Duct	12" Dia. (up to 50' straight)	20" Dia. (up to 200' straight))
Shipping Dim.	60"L x 24"W x 45"H	120"L x 31.5"W x 54"H
Approx. Weight	400 lbs.	1,300 lbs.

Gas Supply:	Inlet Pressure	
	Max W.C.	Min W.C.
Propane	14"	9"
Natural	14"	9"

We Stock A Complete Assortment Of . . .



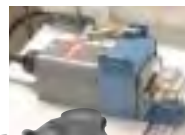
Ducting

Wire Reinforced

- Max. temp. limit 350°F
- Available in 25' lengths

Poly Duct

- Max. temp. limit 200°F



- Hose
- Regulators
- Thermostat Lock Boxes



heat wagon

342 N. Co. Rd. 400 E. Valparaiso, IN 46383
219-464-8818 • 219-462-7985 • www.heatwagon.com