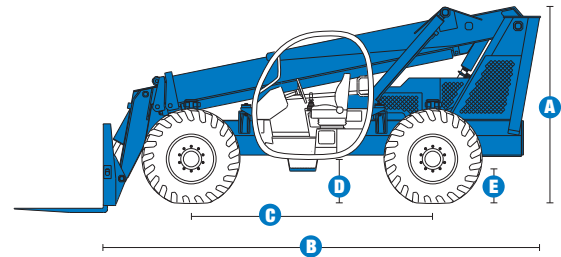


Specifications

MODEL		GTH™-842	
MEASUREMENTS		US	Metric
Maximum lift height		42 ft	12.80 m
Reach		25 ft	7.62 m
Reach at maximum height		3 ft	0.91 m
A Height, stowed		8 ft 11 in	2.72 m
B Length, stowed (without forks)		20 ft	6.10 m
Width		8 ft 6 in	2.59 m
C Wheelbase		10 ft 10 in	3.30 m
D Ground clearance, center		1 ft 5 in	0.43 m
E Ground clearance, axle		1 ft 5 in	0.43 m
Fork cross section		2 x 4 in	51 x 101 mm



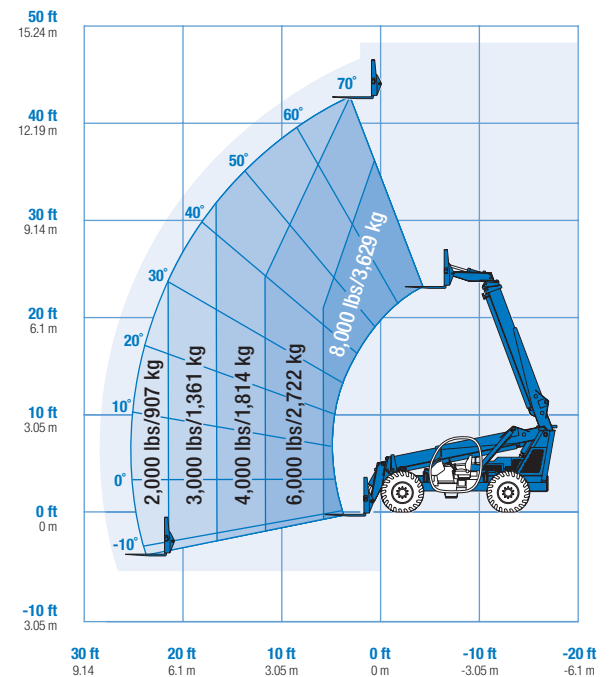
PRODUCTIVITY		
Maximum lift capacity	8,000 lbs	3,629 kg
Lift capacity at maximum height	6,000 lbs	2,722 kg
Lift capacity at maximum reach	2,000 lbs	907 kg
Drive speed	18 mph	29 km/h
Boom up/down	15/11 seconds	15/11 seconds
Boom extend/retract	18/14 seconds	18/14 seconds
Draw bar pull	19,200 lbs	8,709 kg
Turning radius, outside (4WS)	14 ft 9 in	4.50 m
Auxiliary hydraulic flow	3-7 gpm	11-26 lpm
Auxiliary hydraulic pressure	3,000 psi	207 bar
Tires, standard size	13 x 24 in, 12 ply	

POWER	
Power source	Perkins 1104C-44T turbo-charged diesel 99 hp (73.8 kW) John Deere 4045TF270 4 cylinder turbo-charged diesel 99 hp (73.8 kW) Deutz BF 4 2012 99 hp turbo-charged diesel
Electrical system	System voltage 12 volt Alternator 95 amp Battery 1000 CCA at 0°F (-18°C)
Hydraulic tank capacity	34 gal / 129 L
Hydraulic system capacity (w/tank)	50 gal / 189 L
Fuel tank capacity	30 gal / 114 L

WEIGHT		
Weight*	21,500 lbs	9,752 kg

STANDARDS COMPLIANCE ASME B 56.6, ISO 3471, ISO 3449

LOAD CHART GTH™-842**



Distributed By:



www.onesourcerental.com

* Weight will vary depending on options and/or country standards.
** Load ratings vary depending on attachment.

Features

STANDARD FEATURES

MEASUREMENTS

- 8,000 lb (3,629 kg) maximum lift capacity
- 42 ft (12.80 m) maximum lift height
- 25 ft (7.62 m) maximum reach

PRODUCTIVITY

- Full time planetary 4-wheel drive
- 4WS
- Operator selectable front, crab, coordinated steering modes
- 3-speed forward and reverse powershift transmission
- Frame leveling 10° side to side
- Power assisted steering
- Inboard wet disc service brakes
- Wet disc spring applied parking brake
- 13 x 24 in 12-ply rough terrain tires
- Front axle differential lock
- Rear axle stabilization system
- High efficiency/variable displacement hydraulic pump
- ROPS/FOPS canopy (ISO compliant)
- Single, multi-function, proportional joystick
- Rear window
- Machine level indicator
- Full instrumentation
- 48 in carriage and pallet forks
- Boom angle indicator
- 10 micron hydraulic return filter with bypass indicator
- 1,000 cold cranking amps at 0° F (-18° C)
- Reverse motion alarm

OPTIONS & ACCESSORIES

PRODUCTIVITY

- Fully enclosed cab (includes full glass, defroster, wiper, right-side sliding window, split door, washer)
- Fully enclosed cab with air conditioning
- Right-side sliding window
- Glass over skylight bars
- Front window
- Front screen
- Right-side screen
- Adjustable suspension seat
- Dual joystick controls
- Flashing beacon
- Work lights (2 cab mounted front, 1 back-up, 2 stop/tail)
- Road lights (2 cab mounted front, 1 back-up, 2 rear stop/turn/tail, 2 front turn)
- Auxiliary hydraulic circuit
- Fenders (set of 4)
- Mounted disposable fire extinguisher
- Manual quick attach
- Retractable 3 in (8 cm) seatbelt

ATTACHMENT OPTIONS

- Carriages
 - 60 in (1.52 m) swing carriage (45° from center left and right)
 - 72 in (1.83 m) swing carriage (45° from center left and right)
 - 60 in (1.52 m) wide carriage
 - 72 in (1.83 m) wide carriage
 - 48 in (1.22 m) rotating carriage (10° from center left and right)
 - 60 in (1.52 m) rotating carriage (10° from center left and right)
 - 72 in (1.83 m) rotating carriage (10° from center left and right)



- Forks (in addition to standard 48 in pallet forks)
 - 60 in (1.52 m) pallet forks (set of two) 2 x 4 x 60 in (.05 x .10 x 1.52 m)
 - 72 in (1.83 m) pallet forks (set of two) 2 x 4 x 72 in (.05 x .10 x 1.83 m)
 - 60 in (1.52 m) full taper forks (set of two) 2.25 x 5 x 60 in (.06 x .13 x 1.52 m)
 - 60 in (1.52 m) lumber forks (set of two) 1.75 x 7 x 60 in (.04 x .18 x 1.52 m)
 - Cubing tines (set of 4)
- Bucket
 - Light duty rubbish bucket – 1yd³ (.76m³)
- 14 ft (4.27 m) truss boom

ENGINE OPTIONS

- Perkins 99 hp turbo-charged diesel engine
- Deutz 99 hp turbo-charged diesel engine
- John Deere 99 hp turbo-charged diesel engine
- Intake air heater (Deutz only)
- Electric cold start (Deutz engine)
- Electric ether aid (John Deere engine)
- Electric block heater

TIRE OPTIONS

- 13 x 24 in 12-ply foam-filled rough terrain tires
- 13 x 24 in 12-ply foam-filled rock lug tires
- 13 x 24 in 12-ply calcium chloride filled rock lug tires
- 13 x 24 in 12-ply air-filled rough terrain tires

Genie United States

18340 NE 76th Street
P.O. Box 97030
Redmond, Washington 98073-9730

Telephone **+1 (425) 881-1800**
Toll Free in USA/Canada **+1 (800)-536-1800**
Fax +1 (425) 883-3475

Genie Europe

Millennium House
Brunel Drive
Newark NG24 2DE
UK

Telephone **+44 (0)1476 584333**
Fax +44 (0)1476 584334

Email: infoeurope@genieind.com

Distributed By:

Distributed By:



www.onesourcerental.com

Effective Date: July, 2008. Product specifications and prices are subject to change without notice or obligation. The photographs and/or drawings in this document are for illustrative purposes only. Refer to the appropriate Operator's Manual for instructions on the proper use of this equipment. Failure to follow the appropriate Operator's Manual when using our equipment or to otherwise act irresponsibly may result in serious injury or death. The only warranty applicable to our equipment is the standard written warranty applicable to the particular product and sale and we make no other warranty, express or implied. Products and services listed may be trademarks, service marks or trade-names of Terex Corporation, Genie Industries, Inc. and/or their subsidiaries in the U.S.A. and many other countries and all rights are reserved. Terex® is a Registered Trademark of Terex Corporation in the U.S.A. and many other countries. Genie® is a Registered Trademark of Genie Industries, Inc. in the U.S.A. and many other countries. Genie is a Terex Company. © 2008 Terex Corporation.

GTH842 4K 0708G. Part No. 109420

www.genieindustries.com