

T180 T190

Compact Track Loader

Compact Track Loader



Distributed By:



www.onesourcerental.com

One Tough Animal

Bobcat engineering sets the standard for value, comfort and operator-friendly performance!

The Bobcat Standard

Combine all these outstanding features with ease of operation, versatility, maneuverability, wide choice of attachments, worldwide dealer support, service backup, parts availability and high resale, and it all adds up to **total value that can't be matched.**



Track tensioning. Track adjustment is easily accomplished by adding grease to the tensioning cylinder.



Coil spring absorbs varying loads when working in tough applications.



Permanently lubricated idlers and rollers. Fully sealed and grease-lubricated for life. No maintenance is required.



The **Bobcat belt drive advantage** means Bobcat loader engines can be run slower, resulting in a quieter machine that lasts longer and uses less fuel. This system also maximizes pump efficiency and minimizes steering lever effort.



Built-in safety. The Bobcat Interlock Control System (BICS™) requires the operator to be seated in the loader with the seat bar in place and the engine running.



Clean cooling. The exclusive Bobcat dual path cooling system brings clean, cool air from above, through the engine and hydraulic oil coolers, mixes it with engine compartment air, then exhausts it out two



Bobcat serviceability is unsurpassed. Simply open the swing-out tailgate for full access to the engine's checks and fills, filters and battery. Shop time is spent repairing, not gaining access.

Setting the standard for comfort, safety and visibility.

The T180/T190 cab is designed to give you more operator comfort and better all-around visibility.



The standard, fully-adjustable suspension seat allows comfortable all-day operation. The innovative seat bar pivots from the rear, providing secondary restraint protection and serving as a comfortable armrest for operators of all sizes.



Climate-controlled cab. High-visibility front door — with 49% more glass — includes wiper and washer. Along with top, rear and side windows, it will completely seal the cab for efficient heater/vent/AC use.



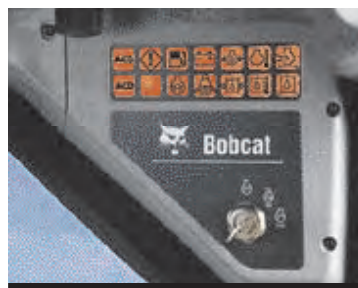
All-around visibility. Bobcat cab design gives you a super view in all directions.

State-of-the-art instrument panels

provide dozens of operational features, diagnostics and monitoring. Optional deluxe instrument panel includes keyless start security system, feature lockouts, digital time and job clocks, multi-language display, even a "help" menu.



LEFT Side Standard Instrument Panel



RIGHT Side Standard Instrument Panel



OPTIONAL Deluxe Instrument Panel

T190 Compact Track Loader Works Where Others Can't!

This tough machine delivers excellent



T190 Compact Track Loader

1,900 lb.	118.2 in.	61 hp	5 psi
Rated Operating Capacity	Lift Height	Kubota Turbo-Charged Diesel Engine	Ground Pressure

flotation, traction, smooth ride and more efficient use of power even in the toughest digging conditions. Its increased flotation and minimal ground disturbance are definite benefits when working on soft ground or landscaped areas.



Only 66 inches wide (68 inches with bucket), the T190 is equipped with a hefty 61-hp Kubota diesel engine. The result: impressive power, hydraulic breakout force and superior tractive effort — features that make quick work of digging, loading, pushing, back-filling, grading, spreading and carrying materials.

The T190's low-profile lift arms give you a great view from the operator's seat, and the vertical lift path provides excellent reach and 1,900 pounds of lift.

Worldwide Support.

With the Bobcat T180 and T190, you get more than an exceptional loader. You also get the support of a worldwide network of Bobcat dealers offering industry-leading attachments, accessories and parts availability.

Their factory-trained service technicians are equipped to handle all your parts and service requirements, including engine and hydrostatic/hydraulic components.

There's an excellent warranty program, too. Get all the details from your Bobcat dealer.

12.6-inch rubber tracks

The unique Bobcat track system gives you a smooth ride as well as all the traction you need for the toughest digging and pushing applications. Other track advantages — low ground pressure, reduced ground disturbance and superior flotation — make the T180 and T190 perfect for working in soft, wet, even muddy conditions where other machines stop dead!



T180 Compact Track Loader — The Right Track



Experience the power and smooth ride of the T180 compact track loader. It's definitely the right loader for tough applications. Climb aboard the T180 and you'll be on the right track!

The 61 hp, 4-cylinder Kubota diesel engine produces plenty of power that translates into impressive tractive effort and pushing ability. A 16.9 GPM pump and 3,300 PSI generate excellent hydraulic breakout as well as power for running attachments, including augers,



landscape rakes, tillers, breakers and others.

All that muscle in such a compact machine — only 76 inches high, 66 inches wide and 130 inches long!

Other performance features include the T180's transverse-mounted engine for single-side servicing, dual path cooling, sealed and lubricated roller bearings, unsurpassed operator comfort and security, and cushioned tilt cylinders.



T180 Compact Track Loader

1,800 lb.	114.5 in.	61 hp	5 psi
Rated Operating Capacity	Lift Height	Kubota Turbo-Charged Diesel Engine	Ground Pressure

The Right Tracks

Bobcat® T180 and T190 compact track loaders deliver top traction for your toughest tasks!

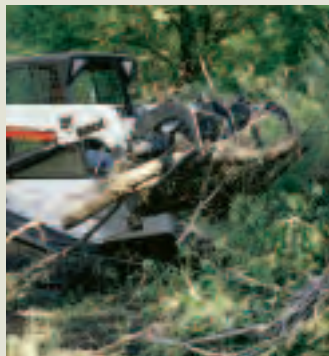
Extend your working season!

Get in earlier...finish faster! These powerful, versatile track loaders let you keep working even when the weather won't cooperate!



Choice of Attachments

As with any Bobcat loader, you can count on a variety of quick-mounting Bobcat attachments for the T180 and T190. The operator can easily replace a bucket with a backhoe, pallet fork, landscape rake, sweeper, tiller, grapple and many more. Hookup is easier with the optional Power Bob-Tach™ mounting system!



Radial Path vs. Vertical Path

We pride ourselves on listening to our customers — and we listened when we received requests for a radial lift path loader that was 66 inches wide, as well as requests for the same size loader with vertical lift path. Each lift-arm design has its own advantages in certain applications:

T180 (Radial Lift Path)

Grading, digging, trenching, backfilling.

T190 (Vertical Lift Path)

Lifting, carrying, loading trucks.

Both loaders can take care of all types of jobs, but some applications can be handled more effectively by a particular lift-arm design.

Remember — whether your jobs require radial lift or vertical lift, you get built-in toughness and dependability with every Bobcat product!

Bobcat® T180 and T190 Compact Track Loaders

Specifications

Performance	T180	T190
Rated Operating Capacity	1800 lb. (816.5 kg)	1900 lb. (862 kg)
Tipping Load	5145 lb. (2334 kg)	5430 lb. (2463 kg)
Hydraulic Pump Capacity	16.3 GPM (61.7 L/min.)	16.3 GPM (61.7 L/min.)
High Flow Option	25.5 GPM (96.5 L/min.)	25.5 GPM (96.5 L/min.)
Ground Pressure (12 in. tracks)	5 psi (34.5 kPa)	5 psi (34.5 kPa)
Travel Speed	7.1 mph (11.4 km/hr.)	7.1 mph (11.4 km/hr.)
Operating Weight	7078 lb. (3211 kg)	7244 lb. (3286 kg)

Dimensions	T180	T190
Length (with bucket)	130.3 in. (3310 mm)	130.3 in. (3310 mm)
Width (with bucket)	68.0 in. (1727 mm)	68.0 in. (1727 mm)
Height	76.3 in. (1938 mm)	76.3 in. (1938 mm)
Height to Bucket Pin	114.5 in. (2908 mm)	118.2 in. (3018 mm)

Engine	Tier II Compliant	
Make/Model	Kubota V2403M-DI-T	Kubota V2403M-DI-T
Fuel/Cooling	Diesel/Liquid	Diesel/Liquid
Cylinders	4	4
HP/Displacement	61 hp / 148.5 cu. in. (45.5 kW / 2.4 L)	61 hp / 148.5 cu. in.
(45.5 kW / 2.4 L)		
Fuel Tank Capacity	26.8 gal. (101.5 L)	26.8 gal. (101.5 L)

Operation	
Steering and Drive	Direction and speed controlled by two hand levers. Fully-hydrostatic, rubber track drive.
Hydraulics	Raise/lower lift arms and dump/rollback bucket controlled by two foot pedals or optional hand controls.

Standard Features	
Adjustable Suspension Seat (vinyl)	Gauges/Warning Lights
Automatically Activated Glow Plugs	Lift Arm Supports
Auxiliary Hydraulics (Variable Flow/Max. Flow)	Lights, Front and Rear
Bobcat Interlock Control System (BICS)	Parking Brake
Deluxe Operator Cab	Seat Bar
Dual Path Cooling System	Seat Belt
Engine/Hydraulic Systems Shutdown	Top & Rear Windows
	Tracks (12.6 in., rubber)
	Turbo-Charger (Approved)
	Spark Arrestor

Options / Accessories	
Advanced Control System (ACS)	Horn
Air Conditioning	Hydraulic Bucket Positioning ²
Backup Alarm	Keyless Start System
Attachment Control Kit	Power Bob-Tach™
Cab Enclosure	Rear Auxiliary Hydraulics
Cab Heater	Ride Control
Catalytic Purifier	Service Safety Training Kit
Deluxe Instrument Panel	Side Windows Kit
Flasher/Strobe/Rotating Beacon Lights	Loader Operator Training Kit
High-Flow Auxiliary Hydraulics Package	Sound Cab
	Special Applications Kit ³
	Water Kit

Distributed By:



www.onesourcerental.com

Operator Training

Training kits, available through your Bobcat dealer's parts department, let you train current and new operators and service technicians on the latest safety, operation and servicing functions on Bobcat loaders. A Spanish language version is also available. Check the Bobcat website for more information: www.bobcat.com



Make tracks to your local Bobcat dealer and see for yourself how the new T180 and T190 compact track loaders can help you work easier, faster, more comfortably — and more productively!

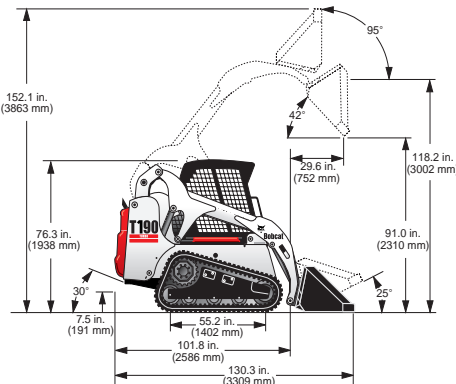
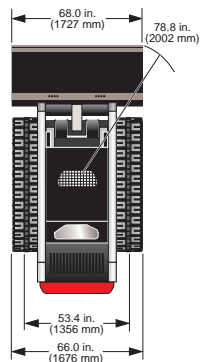
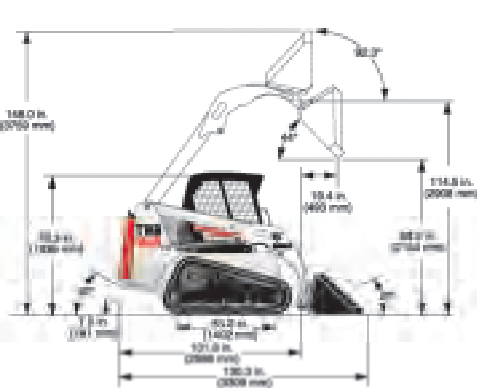
¹ Operating capacity rated with standard digging bucket according to SAE standard J818 - OPERATING CAPACITY TO EQUAL NO MORE THAN 35% OF TIP LOAD.

² Bucket positioning helps operator keep the same tilt of the load during lifting.

³ Includes lexan front door, top and rear windows.

⁴ Special application kit (see #3) must be used.

NOTE — Where applicable, dimensions are in accordance with Society of Automotive Engineers (SAE) and ISO standards. Specifications and design are subject to change without notice. Pictures of Bobcat loaders may show other than standard equipment. All dimensions are given for loader equipped with standard tracks. All dimensions are shown in inches. Respective metric dimensions are enclosed by parentheses. Bobcat Company complies with the requirements of ISO 9001 as registered with BSI.



Bobcat Attachments for this model:

- Angle Broom*
- Auger
- Backhoe
- Box Blade
- Brushcat® Rotary Cutter
- Brush Saw
- Buckets
- Chipper*
- Combination Bucket
- Concrete Mixer*
- Concrete Pump*
- Cutter Crusher
- Digger
- Dozer Blade*
- Dumping Hopper
- Farm Grapple* (for use with utility fork or bucket)
- Grader*
- Hydraulic Breaker⁴
- Landplane
- Landscape Rake
- Pallet Fork (standard)
- Pallet Fork (hydraulic)
- Planer*
- Power Rake
- Rear Stabilizer
- Scarifier
- Snow Blade
- Snow V-Blade
- Snowblower*
- Sod Layer*
- Soil Conditioner*
- Stump Grinder*
- Scraper
- Sweeper
- Three-Point Hitch
- Tiller
- Tree Spade
- Trench Compactor
- Trencher
- Utility Fork
- Utility Frame
- Vibratory Roller
- Whisker Push
- Broom
- Wolf Disc

* Attachment Control Kit Required.



Bobcat®

B-1778

Bobcat Company
P.O. Box 6000 • West Fargo, ND 58078
www.bobcat.com

An **IR** Ingersoll-Rand business

Kn-50M-204-#653011-F