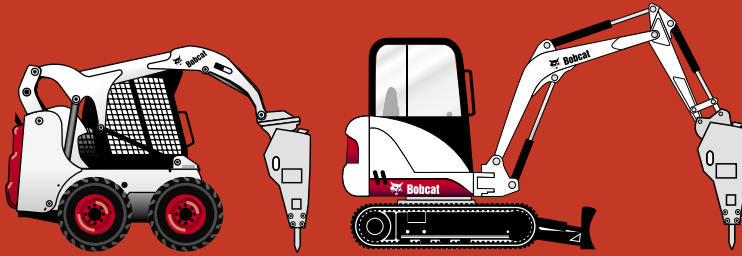




Distributed By:



[www.onesourcerental.com](http://www.onesourcerental.com)



# Hydraulic Breaker Attachment



*One Tough Animal*

# Turn Your Demolition Work into a Smashing Success!

## Bobcat<sup>®</sup> Breaker Features



- **New Horizontal Mounting Frame** positions the breaker vertically for dedicated breaking of horizontal surfaces. Allows for less tilt cylinder extension and the ability to break concrete on an incline.
- **Single-position loader frame** means no pins to pull, no hoses to relocate, no wasted time on the jobsite. It also permits breaking a horizontal or vertical surface from the operator's seat.
- **Diaphragm-type accumulators** reduce maintenance by preventing slow leaks.
- **Unique breaker piston shape** produces trapezoidal shock wave, which exhibits more energy at the end of each piston stroke for greater breaking power.
- **Longer-life breakers** designed for demolition contractors.
- **X-Change™ mounting system** allows quick change from skid-steer or track loader mount to backhoe mount to excavator mount.
- **X-Change cradle** has designed-in wear compensation and is always snug to the loader frame or excavator — a real plus when you have to strategically pinpoint the breaker tool to a curb, next to a building, or when following a fracture line.
- **Bobcat breakers** produce low recoil and minimal hydraulic pressure spike to their carriers.
- **Hardest-hitting breakers** in their respective impact energy classes.

*The Special Applications Kit, which includes a half-inch lexan front door with quarter-inch top and rear windows, must be used when operating the Bob-Tach mounted hydraulic breakers.*



# B700

Here's an improved, more powerful breaker for smaller Bobcat 453, 463, 553 and 753 skid-steer loader models, as well as Bobcat 322, 325 and 328 compact excavators. There's also a variety of quick-change tools available for cutting, chiseling or tamping. (See back page for details.)



For Bobcat 463, 553 and 753 skid-steer loaders; 322, 325 and 328 excavators.

Distributed By:

**One Source**  
RENTALS • SALES • SERVICE

[www.onesourcerental.com](http://www.onesourcerental.com)

**150 FT.-LB.**  
*Impact Energy Class*

# B850

Experience the performance of the B850 breaker on a variety of Bobcat loaders, backhoes or compact excavators. Take advantage of a wide variety of quick-change breaker tools for efficient job performance. (See back page for details.)



For Bobcat \*553, 753, 763, 773, S175, S185 and T190 loaders; 325, 328, 331, 331E and 334 excavators.

\* s/n 520311001 and above.

**300 FT.-LB.**  
*Impact Energy Class*

# B950

The B950 Bobcat breaker offers added performance whether mounted on a variety of Bobcat loaders, backhoes or compact excavators. There's also a variety of quick-change tools available to match your job application. (See back page for details.)



For Bobcat 763, 773, S175, S185, 863, 873, 883, S250, S300, A220, A300, T190, T200 and T300 loaders; 331, 331E, 334, 337 and 341 excavators.

**500 FT.-LB.**  
*Impact Energy Class*

## Specifications

| Breaker                                                  | B700                                                | B850                                                  | B950                                                   |
|----------------------------------------------------------|-----------------------------------------------------|-------------------------------------------------------|--------------------------------------------------------|
| Impact Energy Class                                      | 150 ft.-lb. (200 J)                                 | 300 ft.-lb. (400 J)                                   | 500 ft.-lb. (650 J)                                    |
| CIMA Tool Energy Rating                                  | 125 ft.-lb. (169 J)                                 | 189 ft.-lb. (256 J)                                   | 212 ft.-lb. (287 J)                                    |
| Blows per Minute                                         | 960 @ 8 GPM (30 LPM)                                | 1100 @ 18 GPM (68 LPM)                                | 1280 @ 20 GPM (76 LPM)                                 |
| Flow Requirements                                        | 6-15 GPM (23-57 LPM)                                | 11-18 GPM (42-68 LPM)                                 | 15-22 GPM (59-83 LPM)                                  |
| Breaker w/Nail Point & X-Change Frame Weight             | 320 lb. (145 kg)                                    | 620 lb. (281 kg)                                      | 630 lb. (286 kg)                                       |
| Loader Bob-Tach Frame Weight                             | 203 lb. (92 kg)                                     | 203 lb. (92 kg)                                       | 203 lb. (92 kg)                                        |
| Backhoe/Excavator X-Change Mount                         | Included w/Breaker                                  | Included w/Breaker                                    | Included w/Breaker                                     |
| Tool Working Length                                      | 10 in. (254 mm)                                     | 11 in. (279 mm)                                       | 11 in. (279 mm)                                        |
| Tool Diameter                                            | 1.96 in. (49,8 mm)                                  | 2.4 in. (61,0 mm)                                     | 2.4 in. (61,0 mm)                                      |
| Recommended Working Thickness                            | 2-4 in. (50-200 mm)                                 | 4-10 in. (100-250 mm)                                 | 6-14 in. (150-350 mm)                                  |
| Demolished Volume per Hour <sup>†</sup> , Non-Reinforced | 1-4 yd <sup>3</sup> /hr (.8-3.1 m <sup>3</sup> /hr) | 4-12 yd <sup>3</sup> /hr (3.1-9.2 m <sup>3</sup> /hr) | 5-15 yd <sup>3</sup> /hr (3.8-11.5 m <sup>3</sup> /hr) |
| Reinforced                                               | 1-3 yd <sup>3</sup> /hr (.8-2.3 m <sup>3</sup> /hr) | 1-4 yd <sup>3</sup> /hr (.8-3.1 m <sup>3</sup> /hr)   | 2-6 yd <sup>3</sup> /hr (1.5-4.6 m <sup>3</sup> /hr)   |

<sup>†</sup>These recommendations should be used as a guideline only, since reinforced concrete, strength of concrete, breaker tool used, size of aggregate and age of concrete may vary. Also, breaker performance will vary with operator proficiency, type of carrier and work-site regulations.



### Approved tools for all Breakers:

*The Special Applications Kit, which includes a half-inch lexan front door with quarter-inch top and rear windows, must be used when operating the Bob-Tach mounted hydraulic breakers.*

- A. Crosscut Chisel
- B. Nail Point
- C. Crosscut Wide Chisel
- D. In-line Wide Chisel
- E. Blunt Tool
- F. Tamping Pad
- G. In-line Chisel
- H. Moil (Conical) Point
- I. Crosscut Asphalt Chisel
- J. In-line Asphalt Chisel

These attachments may also be approved for certain new loader and excavator models. See your Bobcat dealer for details.

## Break Up Concrete Horizontally or Vertically!

Size for size, Bobcat breakers smash through concrete material faster and easier than competitive makes. This is due in large part to a unique piston shape consisting of three different diameters that progressively get larger from bottom to top.

The piston shape produces a trapezoidal shock wave, which delivers more energy at the end of each piston stroke for greater breaking power. It also produces low recoil and minimal hydraulic pressure spike to the carriers.

Demolition contractors in particular will appreciate the long life, high reliability and low maintenance qualities of Bobcat breaker attachments.

When you choose a Bobcat breaker, every demolition job will be a "smashing success"!

NOTE - Where applicable, dimensions are in accordance with Society of Automotive Engineers (SAE) and ISO standards. Specifications and design are subject to change without notice. Pictures of Bobcat units may show other than standard equipment. All dimensions are given for loader equipped with standard tires. All dimensions are shown in inches. Respective metric dimensions are enclosed by parentheses. Bobcat Company complies with the requirements of ISO 9001 as registered with BSI.

*The Bobcat Attachments Advantage: Bobcat attachments are engineered and manufactured to fit Bobcat loaders for optimum job performance, dependability and durability.*

Distributed By:



[www.onesourcerental.com](http://www.onesourcerental.com)

Bobcat Hydraulic Breaker Attachment fits these carrier models:

Skid-Steer Loaders:

463  
553  
753  
763  
S130  
S150  
S160  
773  
S175  
S185  
863  
873  
S220  
S250  
S300

Compact Track Loaders:

T180  
T190  
T200  
T250  
T300

All-Wheel Steer Loaders:

A220  
A300

Excavators:

322  
325  
328  
331  
331E  
334  
337  
341  
430  
435  
442



B-1653

**Bobcat Company**  
P.O. Box 6000 • West Fargo, ND 58078  
[www.bobcat.com](http://www.bobcat.com)

Printed in U.S.A.

An **IR** Ingersoll-Rand business

Kn-5M-804-#653092-F

\*See page 3 for details.